



Front Porch Victorian in Watkins Pond Discover the Charm of King Farm



206 Watkins Circle | Rockville, MD 20850



COAKLEY

MICHAEL P. ROSE
Ranked in the Top 1% of Realtors Nationwide
www.MichaelPRose.com

office: 301-340-8700 x103 | cell: 301-814-3200 | mprose57@aol.com

Jon Triandafilou (JT)
cell: 301-938-9096
jt@coakleyrealty.com

Chris Nagel
cell: 301-787-8001
chris@coakleyrealty.com



Rare to market Stanley Martin Lindley model 4BR/4.5BA Victorian with old-fashioned front porch on a PREMIUM fenced corner lot in King Farm just one block from the community center, pool, and KF Metro shuttle bus stop. This home features over 4,900 square feet of living area on three levels including the bonus Au-Pair/teen bedroom suite over the two-car garage and a finished basement. A great sense of light and spaciousness with 10-ft ceilings on the main level and 9-ft ceilings in the lower level. Designer

décor with custom painting, elaborate three-piece chair rail, crown, and shadow box molding, hardwood flooring on most of the main level, custom window treatments, and upgraded lighting throughout.

Enter the gate of the fully fenced yard to the brick walkway and covered front porch with beaded ceiling; front door with side and upper transom windows to hardwood foyer entrance with double door coat closet and powder room; open living room with floor-to-ceiling window and formal dining room separated by decorative columns with box window bump out; gourmet kitchen with 42-inch raised panel maple cabinets, granite countertops, new commercial stainless LG and KitchenAid appliances, granite island/breakfast bar with 36-inch 5-burner GE Café stainless cooktop, pantry, and recessed lighting; breakfast area off of kitchen with sliding glass doors to fenced rear yard; laundry mudroom off of kitchen leading to attached two-car garage; family room with floor-to-ceiling windows, recessed lighting, marble gas fireplace, and built-in entertainment niche; double glass door entry to main level study with built-in bookcases; solid oak staircase with carpet runner to upper level; master bedroom with tray ceiling, huge walk-in closet, and private sitting room; luxury master bath with designer ceramic tile flooring, dual vanities, walk-in ceramic tile shower with frameless glass enclosure, two-person Jacuzzi whirlpool tub, second walk-in closet, and separate water closet; second bedroom with walk-in closet and private ceramic tile full bath; third bedroom with walk-in closet and ceramic tile full bathroom with dual vanities accessed from the hallway; fourth bedroom is a private teen, au-pair, or in-law suite over the attached garage accessed by a private rear staircase off of the kitchen; finished lower level recreation room and enormous storage room with perfect for future expansion; new roof and newer mechanical systems throughout the home.

Right in the heart of everything that King Farm has to offer...only a few blocks to the pool and community center, King Farm Park with playgrounds, ball fields, tennis and basketball courts, King Farm Village Center shopping, and nearby courtesy King Farm shuttle stop to Shady Grove Metro.



Michael P. Rose

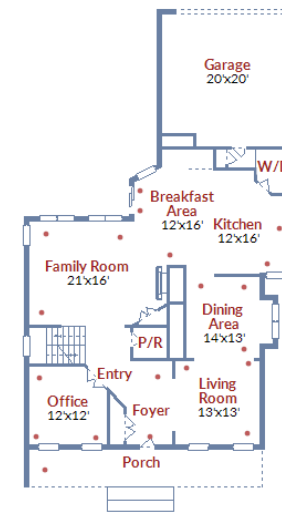


Jon Triandafilou (JT)



Chris Nagel

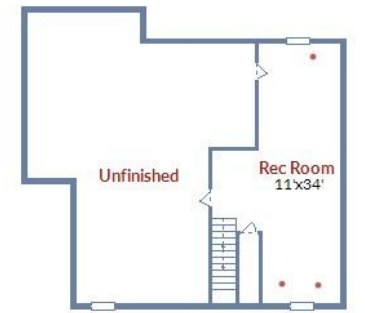
Main Level



Upper Level 1



Upper Level 2



Year Built: 2000

Legal Subdivision: King Farm Watkins Pond

Est. RE Taxes: 12,193.95 (FY 2020)

Lot Size: 6,968 Square Feet

Exterior: Vinyl Siding

Heat: Gas • Furnace (2 zones) | Heat Pump (1 zone)

Cool: Electric • CAC (2 zones) | Heat Pump (1 zone)

Hot water: Gas • 75-gallon

HOA Fee: \$118.65 per month

Elementary School
College Gardens

Middle School
Julius West

High School
Richard Montgomery

Information in this brochure is deemed to be accurate, but should not be relied upon without verification.

